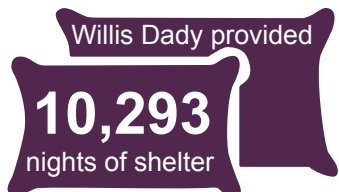
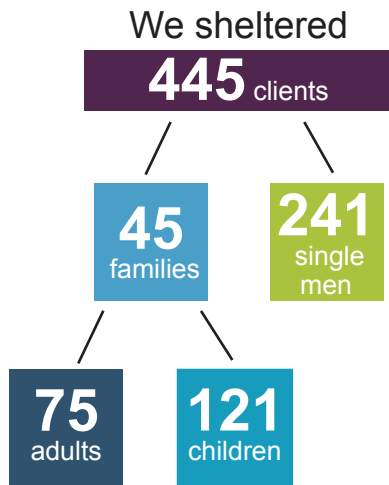


We are thankful for the **generous donor support and community partnerships** that made these programs and services possible. For more information about our work, visit [willisdady.org](http://willisdady.org).

## Emergency Shelter and Case Management

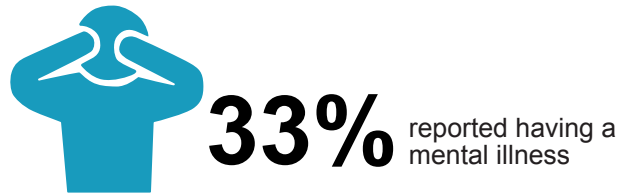
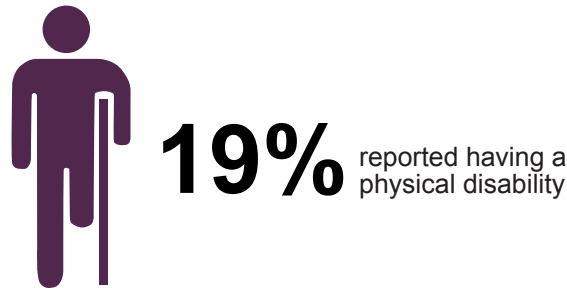
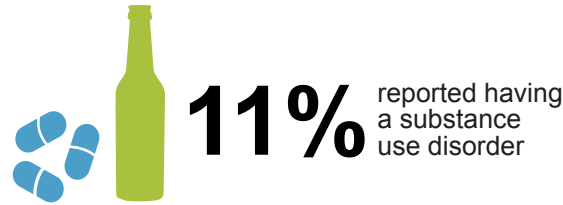
Temporary shelter for single men and families. Case management helps clients get back on their feet and into housing through positive coaching, accountability and connection to services.



**60%** of clients reported exiting to stable housing

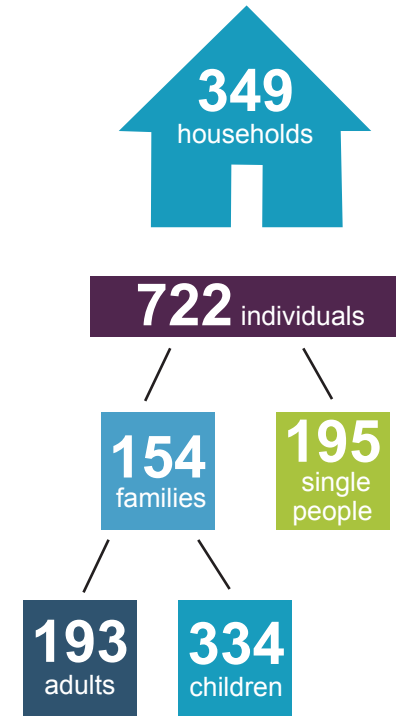
## Special Populations

Circumstances as reported by shelter clients.



## Homeless Prevention

Helping people avoid homelessness and retain stable housing through landlord negotiation, payment plans, connections to services and finding affordable housing.



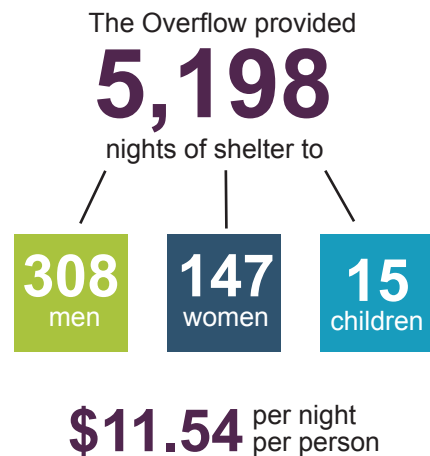
**2%** needed to enter a homeless shelter

### Income Status of Prevention Clients

- Lost employment or decreased income
- Fixed income – Social Security or Social Security Disability
- Lack of reliable transportation

## COWSS Community Overflow Weather Shelter System

For the third consecutive winter, more than 15 local agencies provided overnight shelter to anyone experiencing homelessness during the coldest nights of winter. The Overflow was staffed by Willis Dady and ran November 15, 2017 to March 15, 2018.



## Veteran Services

We operated Supportive Services for Veteran Families through September 30, 2017 and served 55 veterans.

### 2017 Willis Dady Board of Directors

Sam Jones, Board President	Jim Koch
John Oates, Vice President	Kayla Lyftogt
Stephanie Harris, Treasurer	Dave McInally
Rob Bowers, Secretary	Joy Newhouse
John Boston	Matt Patton
Salinya Carew	Janet Slimack
Nathan Fisher	Gisele Tallman
Vince Geis	Jason Vestweber

### 2017 Willis Dady Staff

Millie Achey, Resident Assistant	Jade Riley, VISTA Volunteer Coordinator
Martha Carter, Case Manager	Denine Rushing, Shelter Manager
Alicia Faust, Support Services Manager	Phoebe Trepp, Executive Director
Pat Ford, Bookkeeper	Nautica Walker, Resident Assistant
Ashley Glassberg, Outreach & Marketing	Lisa Williams, Development Director
Deb Lancaster, Resident Assistant	Emily Zimmon, Prevention Advocate
Kelly May, Resident Assistant	
Jani Mustafa, Resident Assistant	

## Volunteer Support

Volunteers share critical talent to fulfill our mission. They bring joy to us while helping us save thousands of dollars. Volunteer duties include:

- Overnight assistants
- Receptionist
- Facility maintenance
- Client focus groups
- Sunday meals
- Food donation
- Donation room
- Marketing



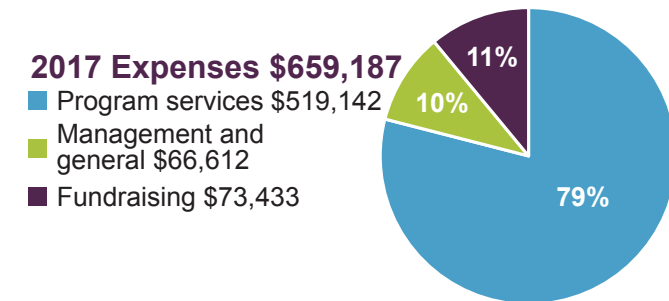
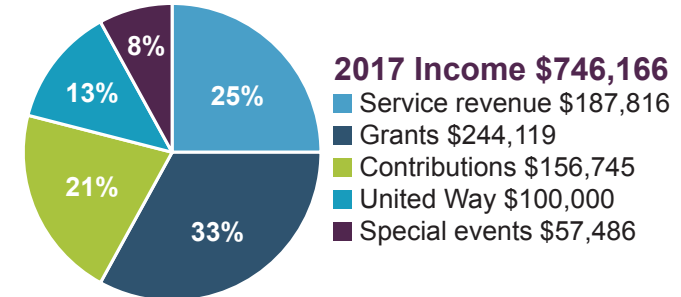
**8,334** hours of service  
contributed  
**\$201,182** value of service  
**313** overnights saved  
Willis Dady  
**\$37,560**



## Financial and Donor Impact

We received operational support from:

**682** individuals    **107** businesses  
**52** faith-based institutions    **24** event sponsors



**\$870,781** 2017 total net assets for operations  
**\$2,214,298** 2017 total assets for capital campaign



## Gratitude

For 31 years, Willis Dady Homeless Services has relied on kind, compassionate and generous donors and volunteers to fulfill our mission. On behalf of our clients, thank you for your support.